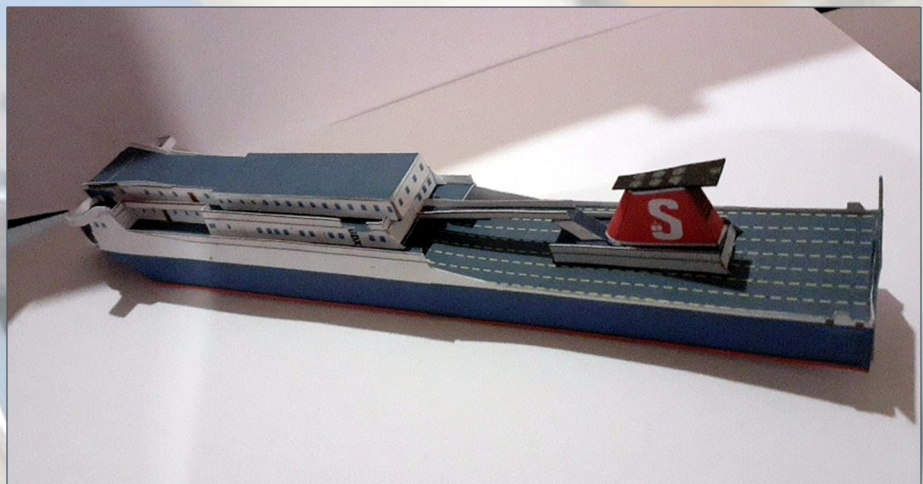
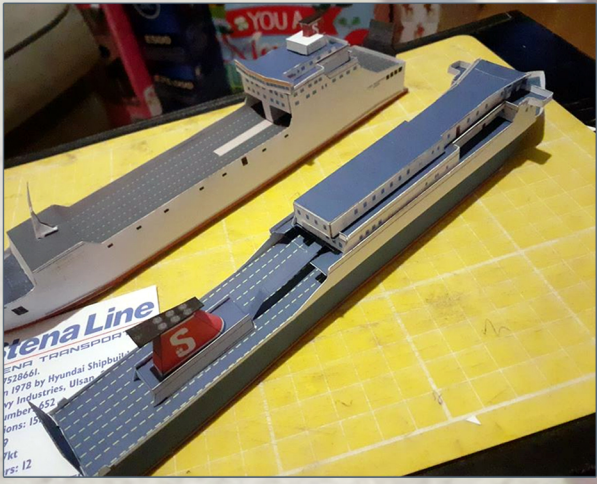


# SEALINK BRITISH FERRIES

## SAINT FREEBIE



WWW.CEBSMODELS.COM



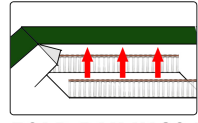
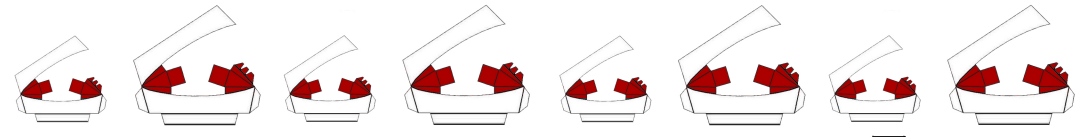
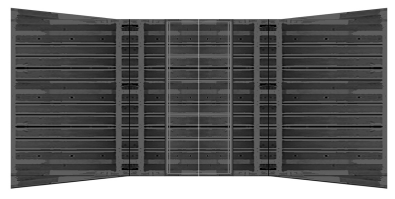
PICTURED: STENA SEAFARER (STENA LINE 2011 TEST BUILD #1&#2)

# SEALINK BRITISH FERRIES

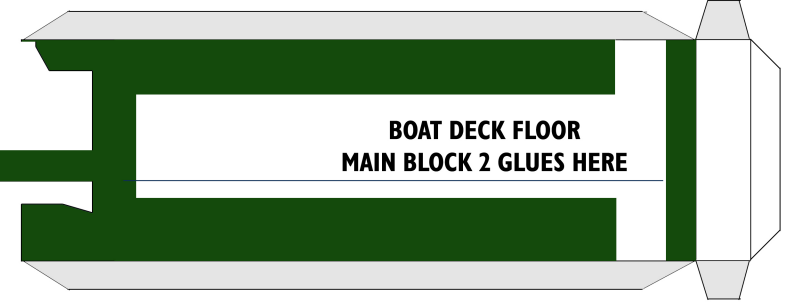
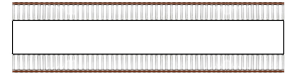
## SAINT FREEBIE

(DON'T PAY FOR THIS, IT'S FREE)

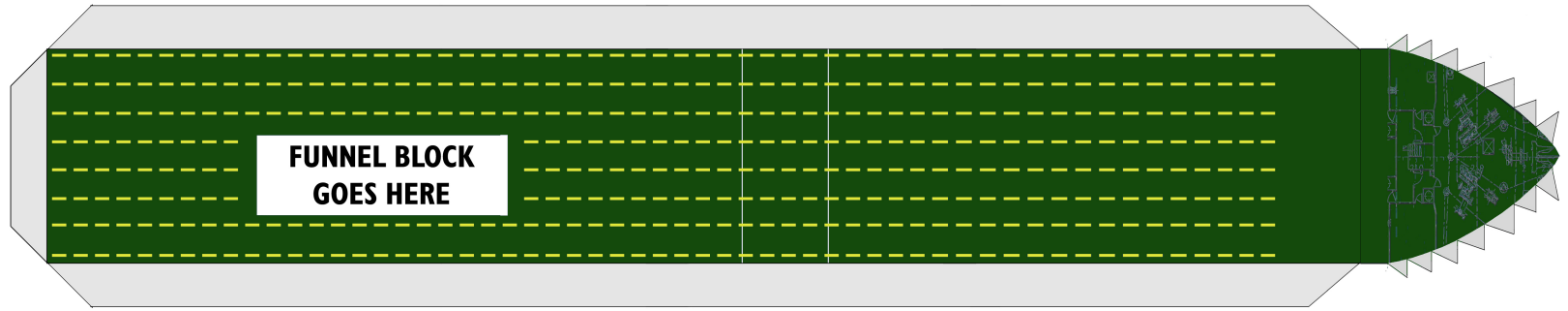
IMO: 7361594  
 Built in 1975 by JJ Sietas KG Schiff Werke GmbH & Co., Hamburg, Germany  
 Yard Number: 757  
 Dimensions : 125.00m x 19.05m x 5.80m  
 GT: 7,987  
 Speed: 18.5.  
 Passengers: 12  
 Cabins (As Rebuilt): 12  
 Lanemetres: 1,090m  
[www.CEBSMODELS.com](http://www.CEBSMODELS.com)



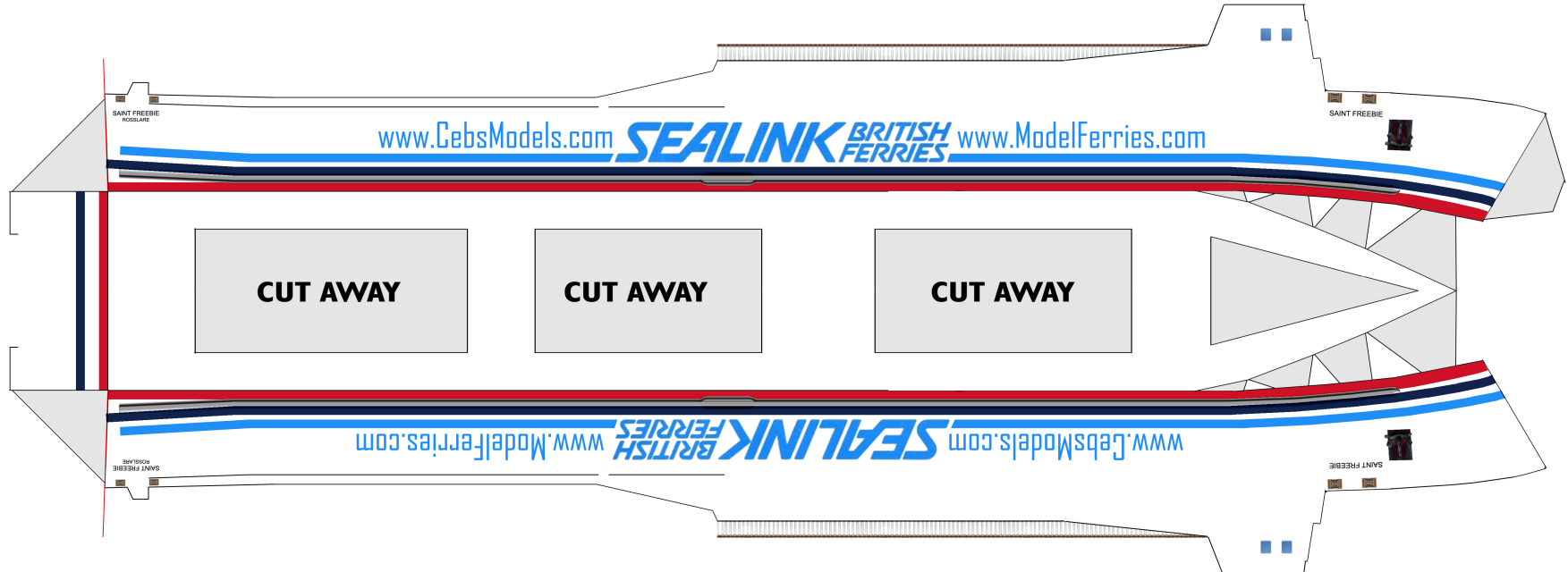
**FOLD RAILINGS UPWARD. GLUE THEM TO THE BOTTOM OF THE WALKWAY BEFORE YOU GLUE THE SIDE-WALL INTO PLACE.**



TOP  
DOWN  
VIEW



**FOLD OVER AND GLUE TOGETHER THEN GLUE THIS MAST GLUES TO THE FRONT OF THE FUNNEL**



1. Build entire bridge deck, main block first, then add the side, rear and front skins following the top tab of BDFI, now add the roof and glue BDFI tab in place, also add the two side tabs.

2. Now the main block construction, build the unit first, then add the side skins. Finally add the roof skin make sure to get the railings folded correctly. After that you can add your bridge unit on top of it. Now you can add the entire construction to your cut and folded boat deck floor.

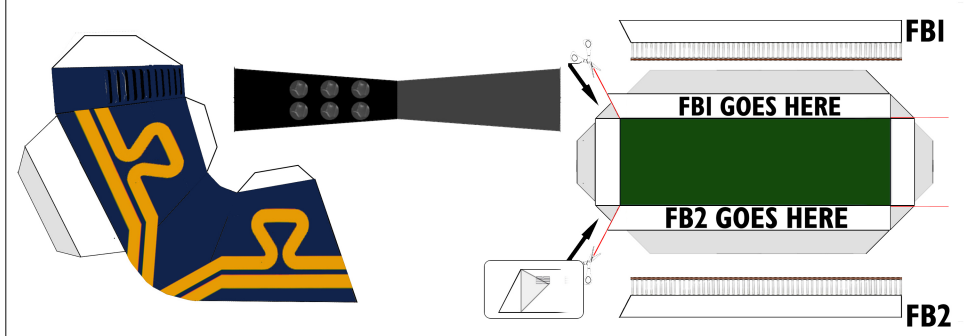
3. Now construct the main hull. Then you can add the main car deck, the floor of this must align with the black line approx 2cm from the end of the rear of the hull.

4. Now add your boat deck including all previously constructed units to the main hull making sure to align the boat deck floor with the bottom of the railings on the side of the hull, don't forget to follow the guide on building the rear walkway as best you can for this step.

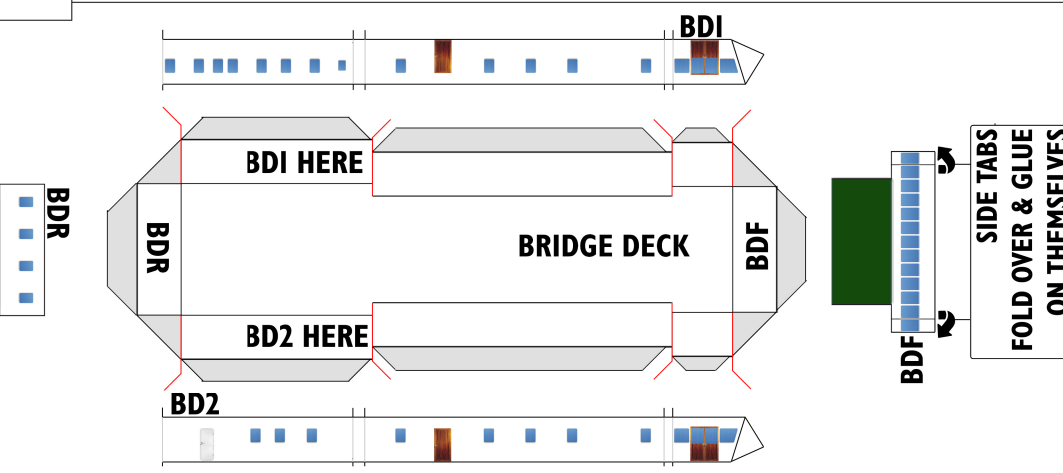
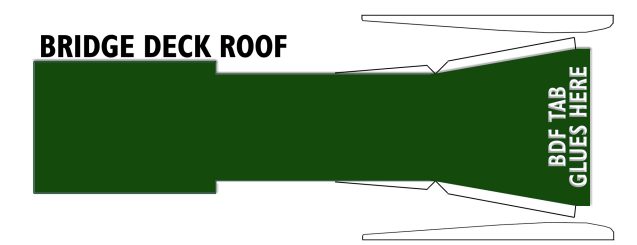
5. Up next is the Funnel and Funnel Block, construct the main block and add the wall skins. Now cut out your funnel. To get the slightly rounded shape at the front shape it pressed against a pencil or similar. Now add your funnel top then add the entire funnel to the funnel block. After which you can add all this to your main car deck and of course attach the rear walkway to the funnel block.

Now add lifeboats and masts and you've just built yourself a pretty cool model, I hope you enjoyed it and will join me again soon in building another one. If you need any help working on this one please jump on the CebModels Facebook page and contact me.

## FUNNEL & FUNNEL BLOCK CONSTRUCTION



## BRIDGE DECK CONSTRUCTION



## MAIN BLOCK CONSTRUCTION

