

Olau

OLAU SEARUNNER

IMO: 7528611.

Built in 1978 by Hyundai Shipbuilders
& Heavy Industries, Ulsan, South Korea.

Yard Number: 652

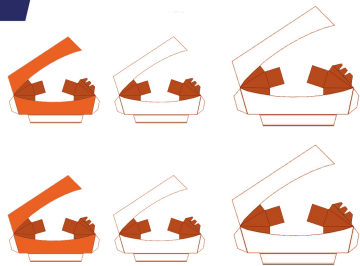
Dimensions: 151.94m x 21.67m x 7.27m

GT: 5,539

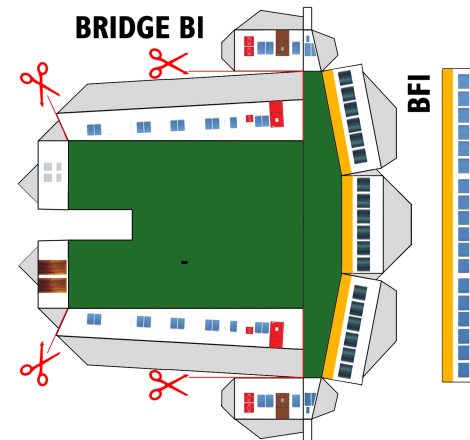
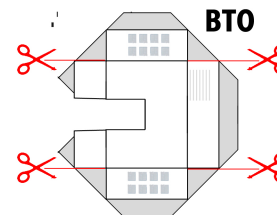
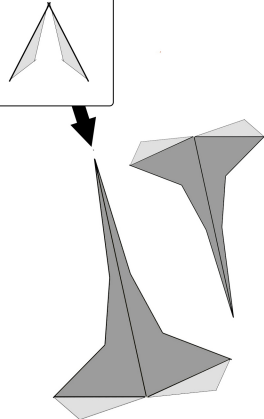
Speed: 17kt

Passengers: 12

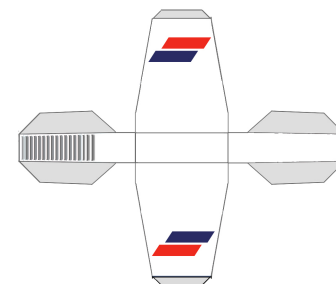
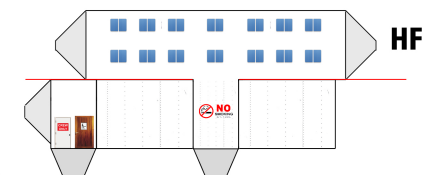
Cabins: 12



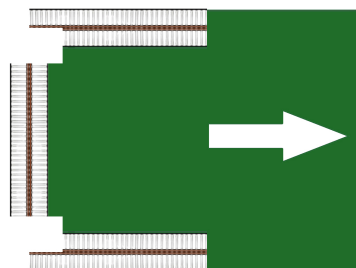
TOP
DOWN
VIEW



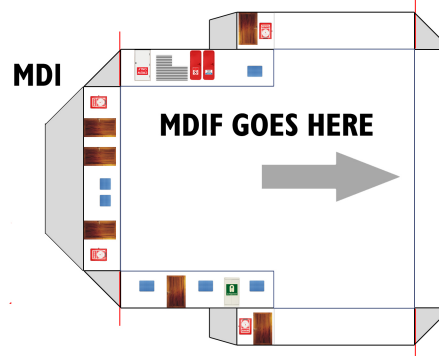
1. Build entire bridge unit.
2. Build MDI unit and add bridge on top
3. Now build MD2 unit and add previous on top
4. Now build BTO (Optional) and Funnel and add to top of constructed unit.
5. Moving on to the hull now, cut out and build it, add HFI now too aligning the top of it with the top of the front wall of the hull. Do not add main car deck yet.
6. Now add your main block (steps 1-4) to the hull, align your deck floors with the base of the rails.
7. Now feed the main car deck from the rear of the ship the full way through, don't forget to add glue first and use your access holes in the base. I suggest doing a practice run of fitting this without glue first as it can be tricky.
8. Now add your main rear door.
9. Add your mast and optional lifeboats now.
10. Enjoy it, and if you'd like maybe snap a picture and post it on the Ceb's Models facebook page



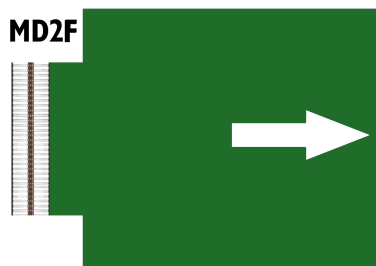
MDIF



MDI



MD2F



MD2

